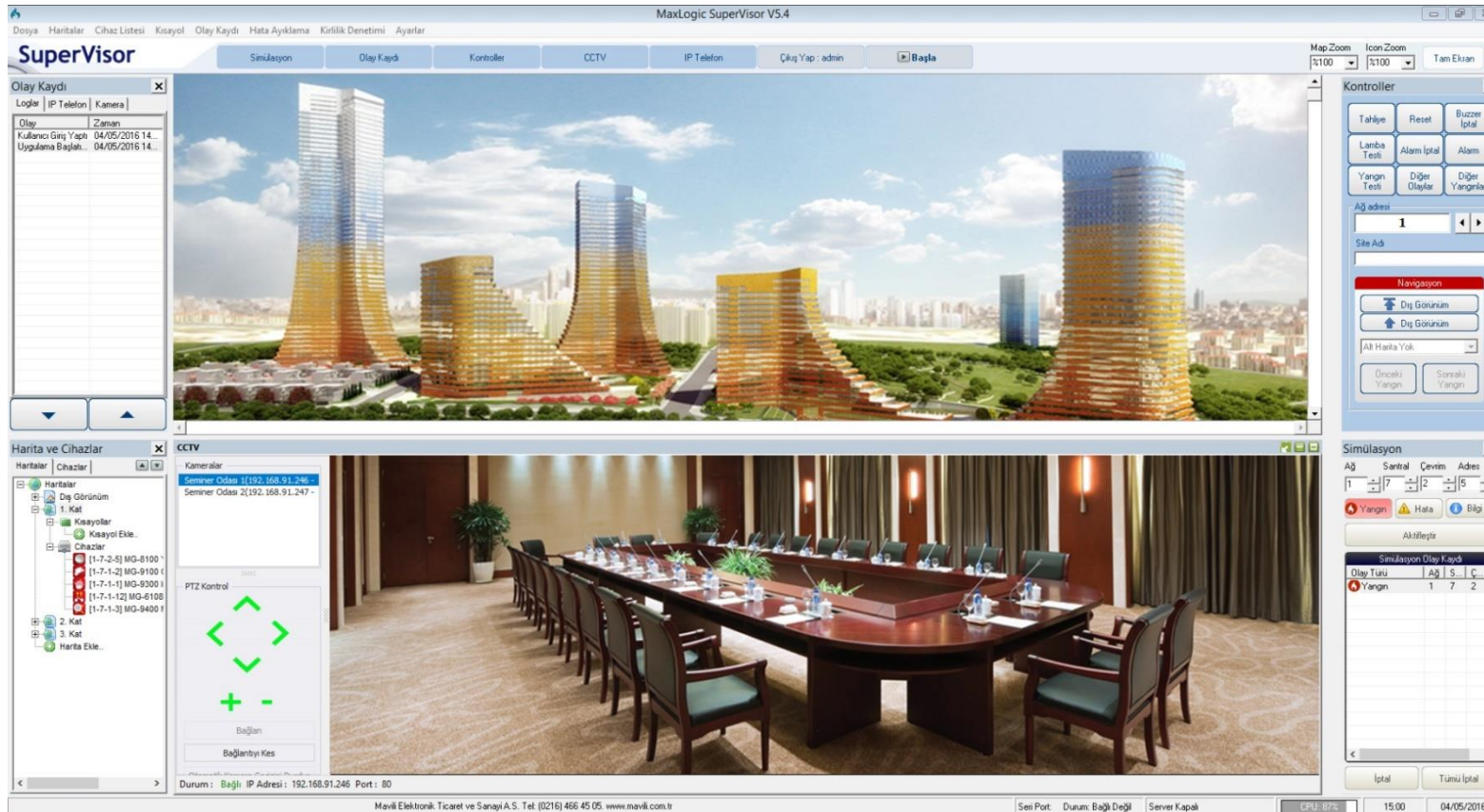


ML-1632

MAXLOGIC SUPERVISOR GRAPHIC MONITORING AND CONTROL SOFTWARE INTEGRATED WITH ENVIRONMENTAL SYSTEMS AND MANAGING

ML-1632 supervisor software is a specially developed and easy to manage computer software that can work with Windows operating system and allows monitoring graphically and control of fire and fault conditions.



## PRODUCT FEATURES

- Monitoring graphically and controlling Maxlogic series intelligent addressable fire alarm panels up to addresses.
- Monitoring graphically and controlling panel based systems (panel relays) except Maxlogic series intelligent addressable fire alarm panels
- Remote monitoring and controlling 1000 different networks consisting of 64 pcs panels by with only one supervisor.
- Bulding projects can be uploaded to system.picture format doesn't matter
- Stratified presentation for each device
- Roaming between the maps automatically or manually in case of fire
- Ability to send remote commands in case of requiring intervention
- Event animations, device type and event voice can be changed according to user
- Fire, error and the other events can be grouped on event profile. By the help of this feature e-mail and/or sms report can be sent to authorized people at determined periods or instantly
- Event logging for every fire, fault, information and information and program start-up, sort by date and event type, print out options are available for event logs which are encolour listed
- CCTV system integration
- By integrating with IP camera systems working with ONVIF standard, it is possible to automatically open IP camera where the fire alarm is triggered, to control the cameras manually or to record the first moment images of the opened cameras and to record memory in JPEG format.
- The communication with firefighter and other telephones is provided by the soft phone application
- Automatic or manual information messages can be sent to determined computers in case of fire
- The communication between PC and fire alarm system can be done via RS-232 or RS-485 and for longer distance GPRS or TCP/IP ports can be used.
- Network is monitored by GCU module or single panel is monitored by SGC module
- 10 different users can be defined
- Fire events in the system can be monitored graphically and controlled with android-based devices.
- In case of fire, informing messages can automatically or manually be sent to computers in LAN or remote computers with defined IP addresses via Superviewer and Superviewer Graph softwares.
- Fire events in the system can be monitored graphically and controlled with android-based devices via Superviewer Android software.
- Computers and android devices can be selectable to send fire events in the panel connected to any network as a warning message by filtering feature of Superviewer Graph and Superviewer Android Applications.
- Transmission of panel based events can be restricted and which events in which panels can be selected for monitoring through the Supervisor software by the network interface feature.

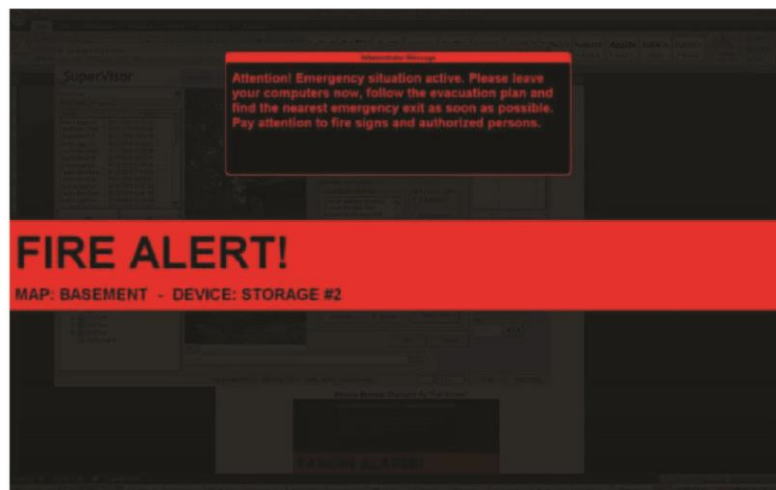
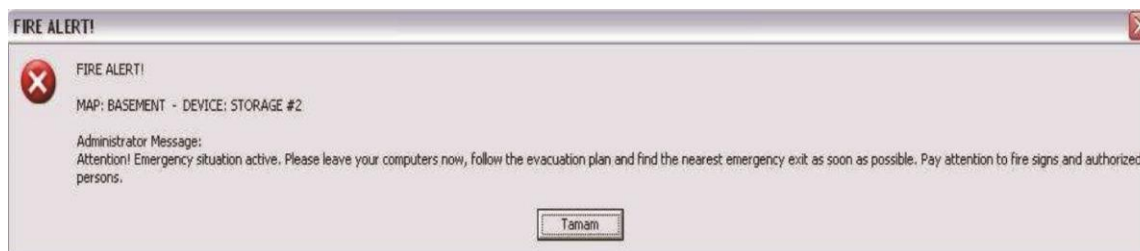
- Vortex panels can be monitored and controlled via Supervisor software.
- Features such as inputs/outputs of Vortex panels, connected devices, supplier information, detector type, unit, gas alarm level and location information can be monitored through the Supervisor software and siren outputs of the panel, error events or detectors can be deactivated. Reset command can be sent to the panel.

## OPTIONAL PRODUCTS USED WITH SUPERVISOR

In fire cases which are occurred in fire alarm system, warning messages can be sent to one or more computers with a registered IP address or all computers in the domain of the computer which the program is installed on. In addition, fire cases can be monitored graphically and controlled via android devices.

- **ML-1641 Superviewer Software**

Warning messages can be sent automatically or manually at the time of incident through the Superviewer software. Warning messages can be sent in the form of optional full screen or message box. For this, ML-1641 Superviewer software should be installed on computers which warning messages will be sent to.



- **ML-1646 Superviewer Graph Software**

Warning messages can be sent automatically at the time of the incident in the form of map via Superviewer graph software. For this, ML-1641 Superviewer graph software should be installed on computers which warning messages will be sent to.



- **ML-1643 Superwiewer Android**

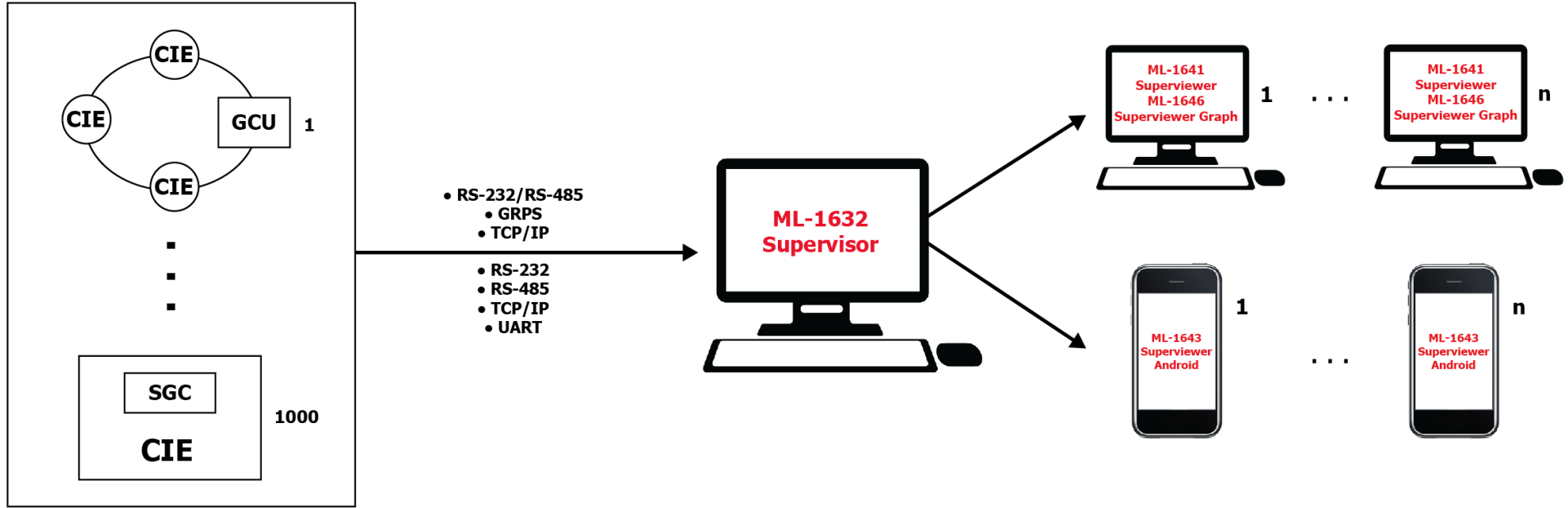
The ML-1643 Superviewer Android application connects to Supervisor remote monitoring and controlling software and also provides monitoring graphically and controlling fire events in the Maxlogic fire alarm system at android based phones. For this, ML-1643 Superviewer android application should be installed on mobile phones which provides monitoring and controlling.



## MODELS

Product Code	Description
ML-1632.1	Supervisor graphic monitoring and control software intagrated with environmental systems and managing of 1 panel
ML-1632.4	Supervisor graphic monitoring and control software intagrated with environmental systems and managing of 4 panel
ML-1632.8	Supervisor graphic monitoring and control software intagrated with environmental systems and managing of 8 panel
ML-1632.16	Supervisor graphic monitoring and control software intagrated with environmental systems and managing of 16 panel
ML-1632.32	Supervisor graphic monitoring and control software intagrated with environmental systems and managing of 32 panel
ML-1632.64	Supervisor graphic monitoring and control software intagrated with environmental systems and managing of 64 panel
ML-1632.128	Supervisor graphic monitoring and control software intagrated with environmental systems and managing of 128 panel
ML-1632.256	Supervisor graphic monitoring and control software intagrated with environmental systems and managing of 256 panel
ML-1632.512	Supervisor graphic monitoring and control software intagrated with environmental systems and managing of 512 panel
ML-1632.1024	Supervisor graphic monitoring and control software intagrated with environmental systems and managing of 1024 panel
ML-1660	USB dongle for supervisor software (USB Dongle)
ML-1641.10	Superwiever dekstop 10 user
ML-1641.25	Superwiever dekstop 25 user
ML-1641.50	Superwiever dekstop 50 user
ML-1643	Superviever Android software 1 user
ML-1643.10	Superviever Android software 10 user
ML-1643.25	Superviever Android software 25 user
ML-1643.50	Superviever Android software 50 user
ML-1646.10	Superviever Graph desktop 10 user
ML-1646.25	Superviever Graph desktop 25 user
ML-1646.50	Superviever Graph desktop 50 user

## SYSTEM BLOCK DIAGRAM



**CIE:** Control and Indicating Equipment (Örneğin; ML-12XX)

**GCU:** Gateway Control Unit - Network bağlı Maxlogic santraller için: ML-1207.XX (RS-232/RS-485, GPRS, TCP/IP haberleşmesi)

**SGC:** Single Gateway Unit - Tek başına çalışan Maxlogic santraller için: ML-12011.XX (RS-232, RS-485, TCP/IP haberleşmesi)  
Diğer marka santraller için: ML-12012.XX (TCP/IP, UART haberleşmesi)